




East Santa Clara Street Master Plan - Phase II

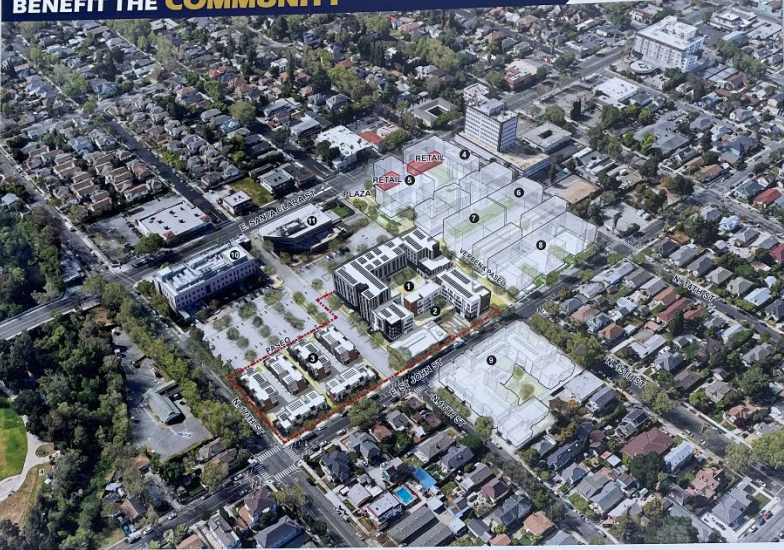
Community Workshop #1B June 10, 2023

Visual Preference Survey Board Results

CO-CREATING
East Santa Clara Street
Master Plan - Phase II

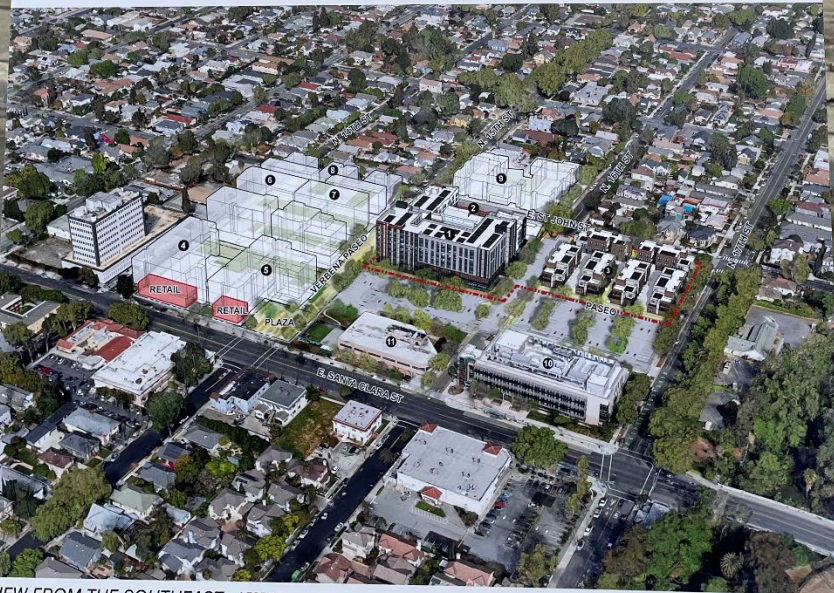




2.8-ACRE 213-UNIT AFFORDABLE HOUSING
 WITH PRIVATE-PUBLIC SPACE AND AMENITIES THAT
 BENEFIT THE **COMMUNITY**



VIEW FROM THE NORTH

<p>LEGEND</p> <ul style="list-style-type: none"> 1 AFFORDABLE LARGE FAMILY HOUSING (HOUSING AUTHORITY PROJECT) 2 SENIOR AFFORDABLE HOUSING (HOUSING AUTHORITY PROJECT) 3 AFFORDABLE FOR SALE TOWNHOMES (HOUSING AUTHORITY PROJECT) 4 BAYBERRY SENIOR HOUSING (HOUSING AUTHORITY PROJECT) 	<ul style="list-style-type: none"> 5 PRIMROSE SENIOR HOUSING (HOUSING AUTHORITY PROJECT) 6 ELDERBERRY FAMILY HOUSING (HOUSING AUTHORITY PROJECT) 7 SAGE FAMILY HOUSING (HOUSING AUTHORITY PROJECT) 	<ul style="list-style-type: none"> 8 TRILLIUM SENIOR HOUSING (HOUSING AUTHORITY PROJECT) 9 HAWTHORN SENIOR APARTMENTS (HOUSING AUTHORITY PROJECT) 10 VALLEY HEALTH CENTER 11 SAN JOSE MEDICAL PLAZA
---	---	---



VIEW FROM THE SOUTHEAST

<p>LEGEND</p> <ul style="list-style-type: none"> 1 AFFORDABLE LARGE FAMILY HOUSING (HOUSING AUTHORITY PROJECT) 2 SENIOR AFFORDABLE HOUSING (HOUSING AUTHORITY PROJECT) 3 AFFORDABLE FOR SALE TOWNHOMES (HOUSING AUTHORITY PROJECT) 4 BAYBERRY SENIOR HOUSING (HOUSING AUTHORITY PROJECT) 	<ul style="list-style-type: none"> 5 PRIMROSE SENIOR HOUSING (HOUSING AUTHORITY PROJECT) 6 ELDERBERRY FAMILY HOUSING (HOUSING AUTHORITY PROJECT) 7 SAGE FAMILY HOUSING (HOUSING AUTHORITY PROJECT) 	<ul style="list-style-type: none"> 8 TRILLIUM SENIOR HOUSING (HOUSING AUTHORITY PROJECT) 9 HAWTHORN SENIOR APARTMENTS (HOUSING AUTHORITY PROJECT) 10 VALLEY HEALTH CENTER 11 SAN JOSE MEDICAL PLAZA
---	---	---

PROJECT OVERVIEW

CO-CREATING
**East Santa Clara Street
 Master Plan - Phase II**



2.8-ACRE 213-UNIT AFFORDABLE HOUSING
 WITH PRIVATE-PUBLIC SPACE AND AMENITIES THAT
 BENEFIT THE **COMMUNITY**



- 1 Senior Affordable Housing + Building 800**
 - 64 homes; 33 parking spaces
 - Adaptive reuse of existing Building 800
- 2 Affordable Large-Family Housing**
 - 113 homes; 115 parking spaces
 - 8,000 SF of amenity space
- 3 Affordable For-Sale Townhomes**
 - 36 homes; 42 parking spaces

*WAFE Program (see)
 1) Senior affordable
 2) Large family - 2
 3) Affordable for sale
 approved?*

Revised Parking Lots for County Facilities

*Note: The unit numbers, parking count, and amenity square-footage is an approximation until building permits have been issued.

East Santa Clara Street Master Plan - Phase II

HOW CAN THE FOLLOWING TYPES OF **PLACEMAKING** FEATURES SHAPE THIS PROJECT?



Handwritten notes on sticky notes:
 - Pink: "I would suggest if the landscape could include on site external components as exemplified in..."
 - Yellow: "Great landscaping which not just enhances the neighborhood but also provides a great outdoor space for people to enjoy. It also provides a great outdoor space for people to enjoy."
 - Yellow: "The yellow - makes it really pop. I like the way the yellow is used in the landscape."
 - Yellow: "I like the way the yellow is used in the landscape."
 - Yellow: "I like the way the yellow is used in the landscape."

LANDSCAPING
 Place a sticker here by ideas that appeal to you!



LIGHTING
 Place a sticker here by ideas that appeal to you!



STREETSCAPE
 Place a sticker here by ideas that appeal to you!



PUBLIC ART
 Place a sticker here by ideas that appeal to you!



COMMUNITY PLAZA
 Place a sticker here by ideas that appeal to you!



PASEO
 Place a sticker here by ideas that appeal to you!



OUTDOOR SEATING
 Place a sticker here by ideas that appeal to you!



COURTYARD
 Place a sticker here by ideas that appeal to you!

CO-CREATING
**East Santa Clara Street
 Master Plan - Phase II**



WHAT TYPE OF **LANDSCAPE** DESIGN FEATURES DO YOU LIKE?



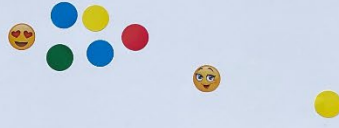
COURTYARD

Place a sticker here by ideas that appeal to you!



PUBLIC ART

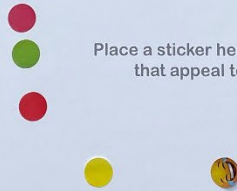
Place a sticker here by ideas that appeal to you!



something to bring people in - like a coffee shop

PLAZA

Place a sticker here by ideas that appeal to you!



PEDESTRIAN PASEO

Place a sticker here by ideas that appeal to you!



CO-CREATING
East Santa Clara Street
Master Plan - Phase II



WHAT TYPE OF **ARCHITECTURAL CHARACTER**
DO YOU PREFER?



#1

Place a sticker here by ideas
that appeal to you!



#2

Place a sticker here by ideas
that appeal to you!



#3

Place a sticker here by ideas
that appeal to you!



#4

Place a sticker here by ideas
that appeal to you!



CO-CREATING
East Santa Clara Street
Master Plan - Phase II



WHAT **ARCHITECTURAL CHARACTER**
DO YOU WANT TO SEE FOR THIS PROJECT?



AFFORDABLE
SENIOR HOUSING



Place a sticker here by ideas
that appeal to you!



AFFORDABLE
LARGE-FAMILY HOUSING



Place a sticker here by ideas
that appeal to you!

yes!!
NO
with
balconies



AFFORDABLE
FOR-SALE TOWNHOMES



Place a sticker here by ideas
that appeal to you!

CO-CREATING
**East Santa Clara Street
Master Plan - Phase II**



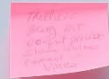
WHAT TYPE OF **ARCHITECTURAL ELEMENTS**
DO YOU WANT TO SEE FOR THIS PROJECT?



TRELLIS



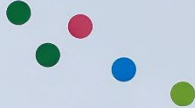
Place a sticker here by ideas
that appeal to you!



WELCOMING LOBBY



Place a sticker here by ideas
that appeal to you!



BAY WINDOW

Place a sticker here by ideas
that appeal to you!



PORCH



Place a sticker here by ideas
that appeal to you!



CO-CREATING

East Santa Clara Street Master Plan - Phase II



WHAT DO YOU WANT THE PROJECT TO LOOK LIKE
IN TERMS OF **COLOR AND MATERIAL** ?



EXTERIOR PLASTER

Place a sticker here by ideas that appeal to you!



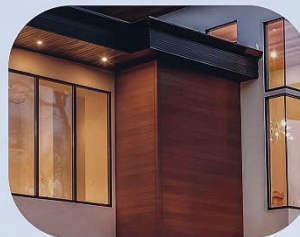
FIBER CEMENT PANEL

Place a sticker here by ideas that appeal to you!



VINYL WINDOW

Place a sticker here by ideas that appeal to you!



FIBER CEMENT PANEL

Place a sticker here by ideas that appeal to you!



METAL STOREFRONT

Place a sticker here by ideas that appeal to you!



METAL CANOPY

Place a sticker here by ideas that appeal to you!



CO-CREATING
**East Santa Clara Street
Master Plan - Phase II**



WHAT DO YOU WANT THE PROJECT TO LOOK LIKE
IN TERMS OF **COLOR AND MATERIAL** ?



16TH STREET & BUILDING 800



AFFORDABLE LARGE-FAMILY HOUSING



11

BUILDING DESIGN

CO-CREATING
**East Santa Clara Street
Master Plan - Phase II**



WHAT DO YOU WANT THE PROJECT TO LOOK LIKE
IN TERMS OF **COLOR AND MATERIAL** ?



VERBENA PASEO
SENIOR AFFORDABLE HOUSING
BUILDING 800 & PLAZA



AFFORDABLE FOR-SALE TOWNHOMES

*Painted red?
So it doesn't
look like a
child's wooden
blocks?*

*Please get back
further from sidewalk
with more privacy
or find a material
we explore with
smart signage.*